



CSC experiences on sharing HEI data in Finland

Heini Manninen

Development Manager

Reporting, Analytics and Insight Services for Education

BI SIG Winter Seminar

3rd February 2020



Agenda



- CSC in short
- National infrastructure of educational and research information in Finland

Case ***vipunen***  

- Reasoning and value of setting up the national infrastructure

Heini Manninen

MSc (Econ) 2004 | Helsinki School of Economics (today Aalto University, School of Business)



taloustutkimus

B2B and B2C Market Research
Customer Experience
Qualitative Research

2004-2010

KANTAR TNS

B2B Market Research
Customer Experience
Employee Experience

2010-2011

Customer data management & analytics
BI & Strategy
Consumer Insight & Engagement
Segmentations
Business Cases & Game development

2011-2018



Consumer Insight & Engagement
KPI's
Application development
Agile Digital Service Development

2018-2019 **S-Pankki**

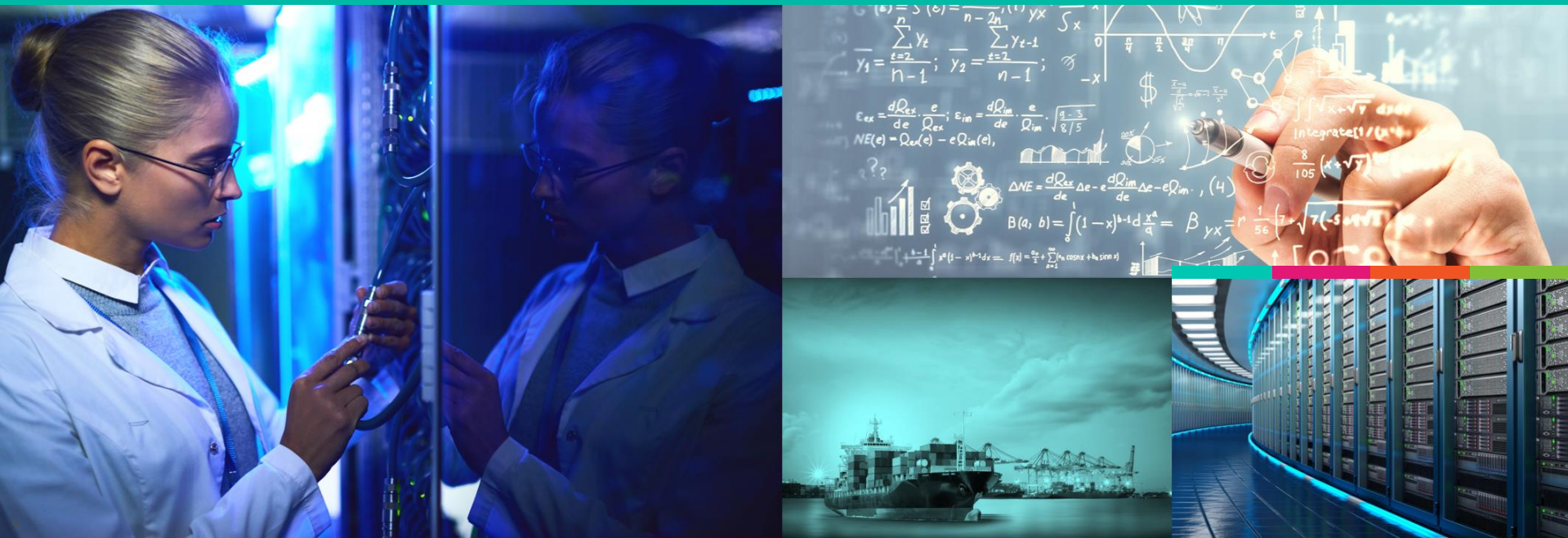


Vipunen Project Manager 2019
Development Manager 2020 –

**Top team of 10
Developers, Application, Reporting,
and Analytics Specialists &
Coordinators**

Reporting, Analytics & Insight
Services for Education (RAISE)
BU: Services for Digitalization of Education

CSC in short



Non-profit state
organization with
special tasks



Turnover
in 2018
44,9 M€



CSC - IT Center for Science Ltd.

Headquarters in
Espoo
Data center in
Kajaani



Owned by state **70%**
and all Finnish higher education
institutions **30 %**



Circa
+400
employees
in 2019

We provide high quality ICT expert services for

- Research
- Education
- Culture
- Public administration
- Enterprises

Our targets

- Enable world-class data management and computing
- Maximize value of data
- Leverage artificial intelligence
- Pave way for lifelong learning

Business Units



Services for
Computational
Research



Services for
Digitalization of
Education



Services for
Data Management

+ Platform Services

National infrastructure of educational and research information in Finland



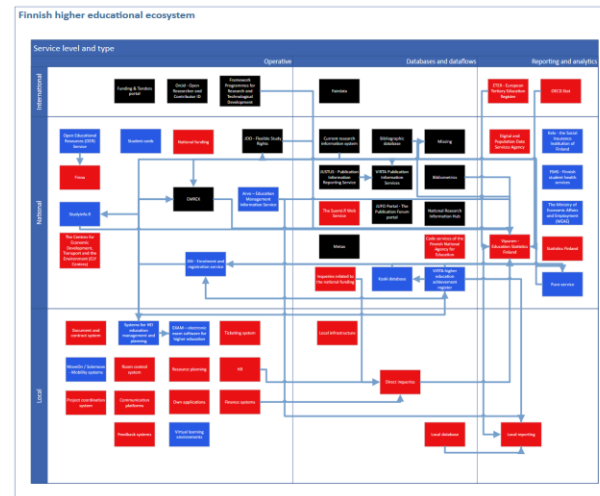
Management of national education information infrastructure

- The Ministry of Education and Culture (MoEC) and the Finnish National Agency for Education (EDUFI)
 - Responsible for managing the national data warehouse and national data content
- HEIs
 - Own internal data warehouse systems and infrastructures to support their performance
 - Platforms, systems, practices and capabilities vary
- CSC
 - Operates as a national service provider
 - Is responsible for the technical realization of some national education data collection
 - Offers information and data services and support for both of its owners according to their decision and priorities



Ecosystem of educational data in Finland

- To get the *big picture* on information and data flows between all operators can be tricky
- Working on a draft of ecosystem of educational data
 - Based on workshop with HEIs on September 2019
- Goals
 - To visualize the current ecosystem of HEI data sources and systems
 - To point out the relations between different systems and needs for development
 - To better support HEIs, MoEC and EDUFI in data and knowledge management

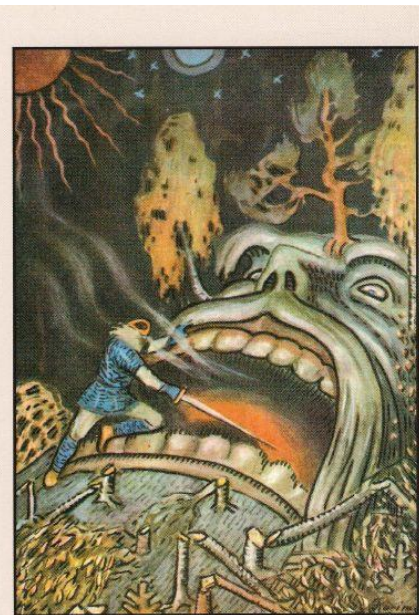


<https://app.powerbi.com/view?r=eyJrIjoizTk2NzVmNGltN2QzS0oYTc2LWJkMTctNjYxNTI0YjYmUxliwidCI6IjJkMDczODlkLTQoYjgtNDcxNio5ZGEyLWMoZTNhY2YwMzBkYiIsImMiOiJh>

Vipunen background

Information portal and data warehouse for education administration

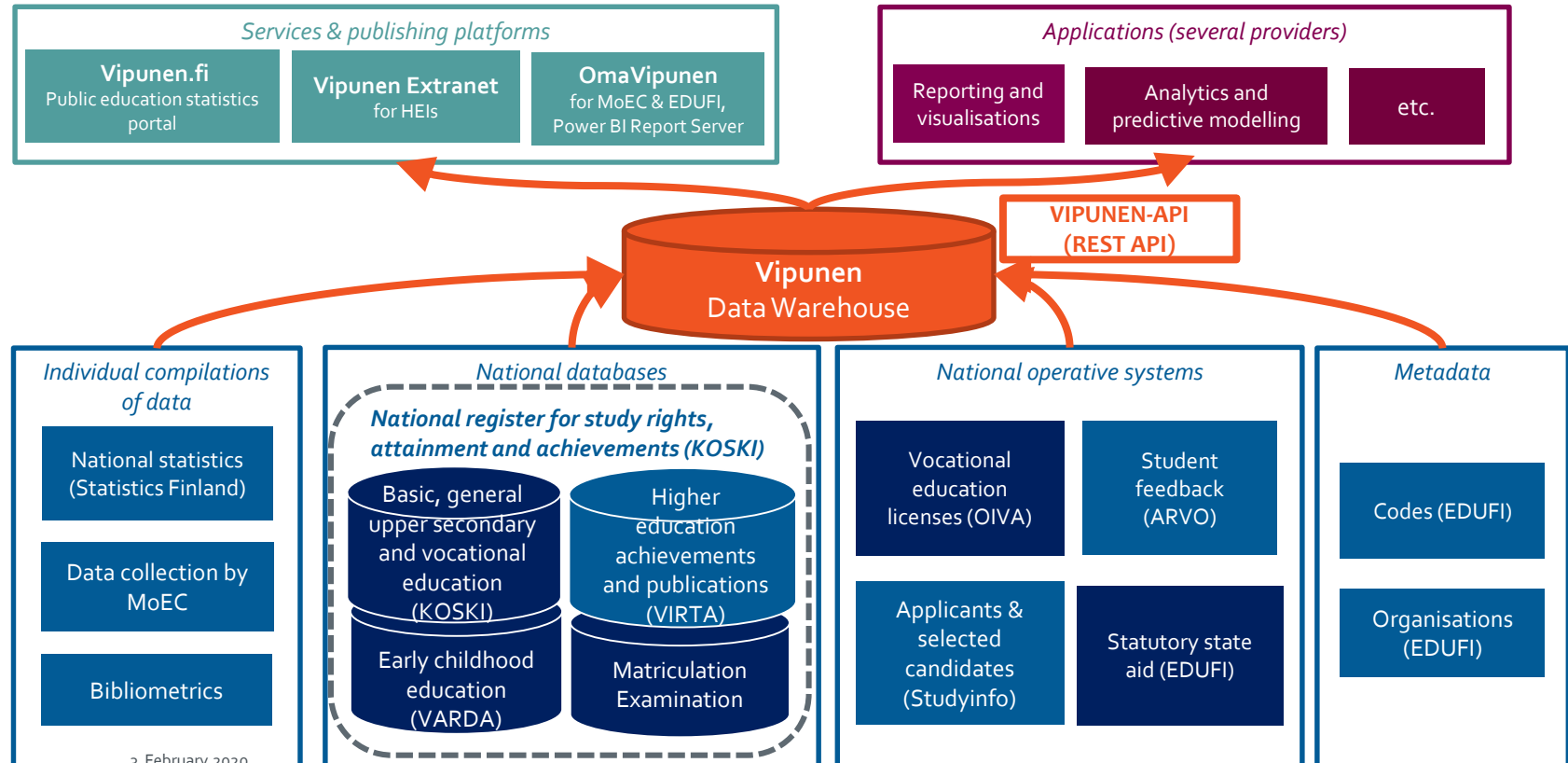
- Early 2010's MoEC and EDUFI decided to build a reporting portal covering information on all levels of education
- Vipunen portal was released in 2013
 - Name *Vipunen* origins from the Finnish national epic the Kalevala
 - In Kalevala *Vipunen* is an old mythical giant and a wise man who has in possession valuable ancient knowledge
- At first Vipunen's information was based on Statistics Finland's data
- By 2016 Vipunen made available educational information from 6 different sources
- In 2018 Vipunen portal reached
 - over 120 000 user sessions
 - over 65 000 users



Virkkoi viisas Väinämöinen,
sekä virkkoi, että vaati:
"Ei sanat salahan joua,
eikä luottehet lovehen!"
Silloin virsikäs Vipunen,
Joll' oli suussa suuri tieto,
aukaisi sanaisen arkun,
virsilippahan levitti:
lauloi synnyt syitä myöten,
luottehet lomia myöten.

Vipunen Ecosystem today

Information portal and data warehouse for education administration



Vipunen – Education Statistics Finland

- Public online portal: <https://vipunen.fi/en-gb/>
- All education levels represented
- Content is arranged according to the sectors of education
 - All levels and sectors
 - Pre-primary and basic education
 - General upper secondary education
 - Vocational education and training
 - University of applied sciences education
 - University education
 - Higher education and R&D activity
 - Population, educational and vocational structures
- Approx. 2 000 Excel reports and PBI data visualisations (Finnish, Swedish, English)
- Provides tools to explore data through various variables



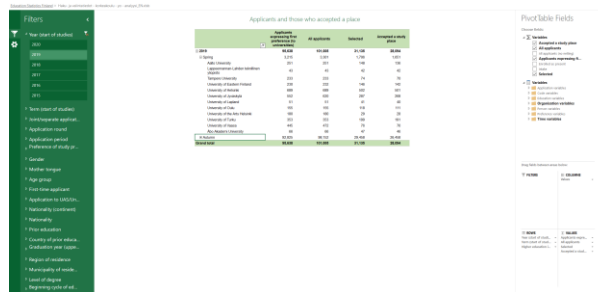
Vipunen Extranet

- Restricted extranet portal for higher education institutions
- More dynamic data and targeted reports for the HEIs
- Data sources
 - Higher education achievements and publications (VIRTA)
 - Data collection by the Ministry of Education and Culture
 - Applicants & selected candidates (Studyinfo/ EDUFI)
 - Student feedback (Arvo surveys)
 - National statistics (Statistics Finland)
- Layout and content mainly similar to public portal
- Same analysis tools as within the public Vipunen portal



Data and reports

- Vipunen provides mainly
 - Excel Pivot reports
 - Power BI visualizations
- Vipunen API provides machine readable data for some data sets
 - Challenges e.g.: Data anonymity and demand to be open for everyone (no user authentication)
- MoEC and EDUFI have live access to Vipunen DW data cubes through Excel and Power BI
 - Availability of wider range of data variables and measures
 - Availability of un-anonymised data
 - Possibility to produce ad hoc and customized reports
- Let's look at some examples



https://vipunen.fi/en-gb/_layouts/15/xlviewer.aspx?id=en-gb/Reports/Haku-%20aja%20valintatiedot%20-%20korkeakoulu%20-%20oy%20-%20analyysi_EN.xlsx

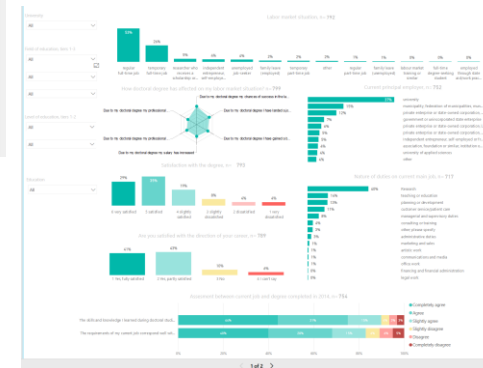
Applicants and those who accepted a place (universities)
Excel Pivot



https://vipunen.fi/en-gb/_layouts/15/xlviewer.aspx?id=en-gb/Reports/Yliopistokoulutus%20-%20opiskelijapalaute%20-%20rahoitusmalli%20-%20vuosi_EN.xlsx

Student feedback for university at the graduation phase
Excel Pivot

Career Monitoring (doctoral degrees)
PBI Visualization



<https://app.powerbi.com/view?r=eyJrJoiNDVlZGM4NzEhNTg1YyY0MDY4LThtMjAtYmEyZGVkNmY2MjY2liwidCI6IjIjMDczODIklTQ0YigNDcxNiosZGEyLWMoZTNhY2YwMzBkYlslmMiOjhg>

How HEIs use Vipunen and other information platforms

Source: Workshop with HEIs on Ecosystem of Educational Data, September 2019



How HEIs collect data?

- Excel files
- CSV files
- Application programming interfaces (APIs)
- Screen shots from browser
- Copying from browser

How HEIs present data forward?

- Power BI & Excel
- Data tables
- Graphics
- PowerPoint presentations
- Own reporting systems

Most using mainly
Excel or CSV

API used by
only a few

To whom information is produced?

- Different levels of management (steering groups, faculties, departments, student affairs)
- Those responsible of operations development
- Communications and media relations
- Applicant marketing managers
- Lobbyists
- HR

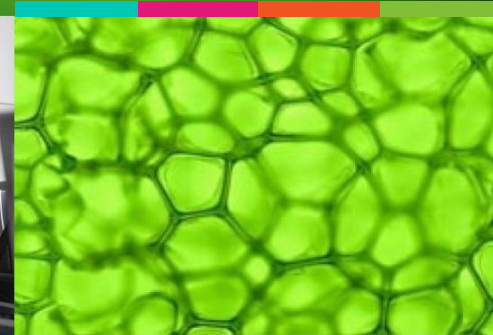
How information is used?

- Anticipation of operations and funding
- Allocation of resources
- Applicant marketing development
- Career advice development
- Lobbying
- Recruiting

Difficulties in
combining public
and organization's
own data

Reasoning and value of setting up the national infrastructure

Challenges and development needs



Reasoning and value of setting up national infrastructure

- Maximizing the value of data
- Making data available for various users
- Streamlining the use of data, e.g.:
 - VIRTAtietopalvelu (study information) provides higher education students data nationally to Finnish Student Health Services, Helsinki Region Transport and Social Insurance Institution of Finland (Kela)
 - VIRTAtietopalvelu (publications) is integrated to the Academy of Finland's funding system and lightens the administrative workload of researchers in reporting their publications
 - Varda (early childhood education data system) provides up-to-date information on early childhood education to Kela, ministries, Finnish institute for health and welfare

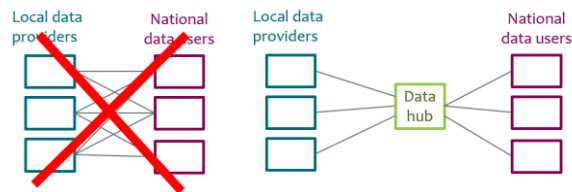
PROs for...

HEIs

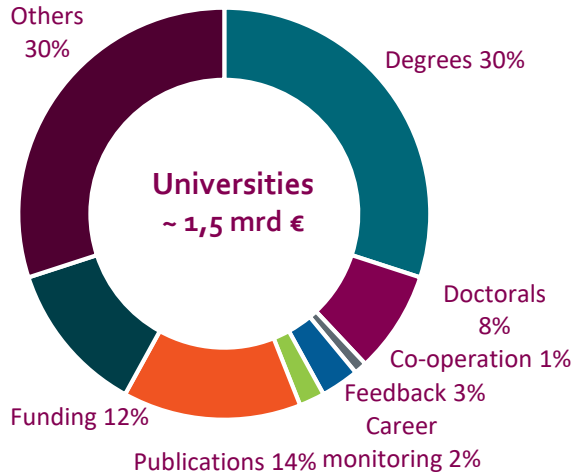
- ✓ Possibility to check and evaluate data
- ✓ Benchmarks
- ✓ Lessen the need for local or own data systems

Ministry

- ✓ Structured data in common format
- ✓ Comparisons
- ✓ Possibility to check and evaluate data
- ✓ Leading with knowledge, eg. funding



Data hubs support the allocation of Ministry's national funding for education and research

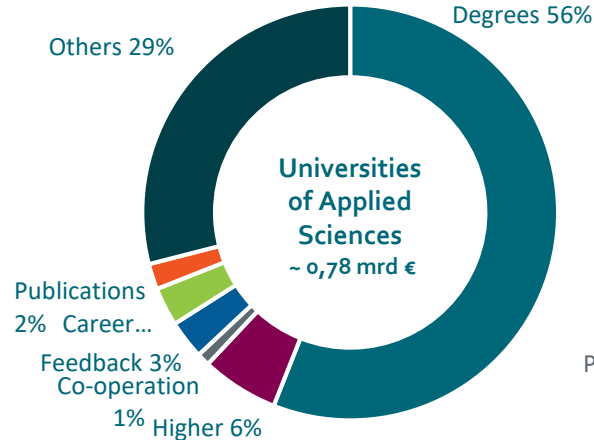


VIRTA-opintotietopalvelu, EMREX: 1 076 milj. €

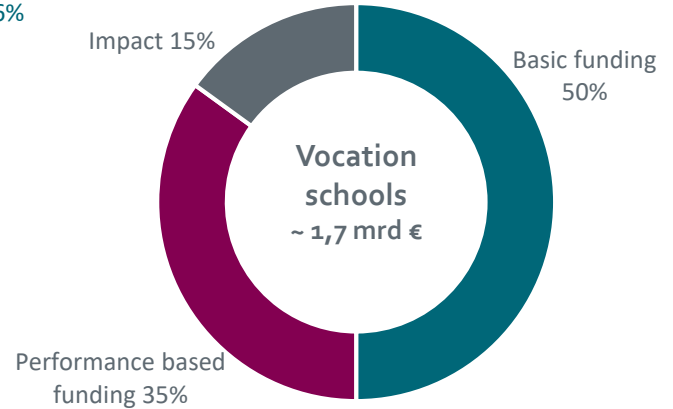
VIRTA-publications, publication portal: 234 milj. €

KOTA, Ministry's own data surveys, KTLO-raportointi- ja analytiikka: 187 milj. €

ARVO – student feedback system: 125 milj. €



JUSTUS – publication records: 16 milj. €

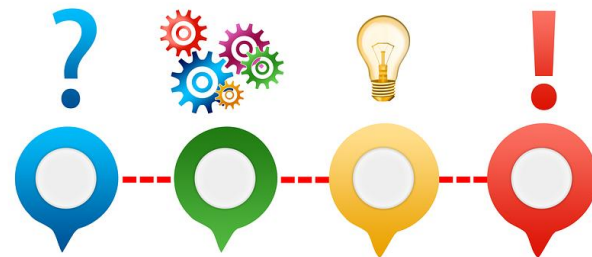


Vocational schools (OIVA, AMOS) steering system (funding)

Challenges & HEI's needs identified by CSC

National infrastructure of educational and research information

- API demand is growing: HEIs are interested in row level “raw” data, self-service analytics and customized reporting
- Need for data that is structured by HEI's own organizational structure or other customized way
- Need to save customized Vipunen report templates for later use and updates
- Vipunen information portal's usability, management and maintenance
 - Vipunen portal and its data content and sources have grown vastly in the last years
- GDPR (General Data Protection Regulation)
- Some challenges in sharing data and abilities to decide on common practices and systems – many viewpoints and decision makers, sometimes even conflicting needs

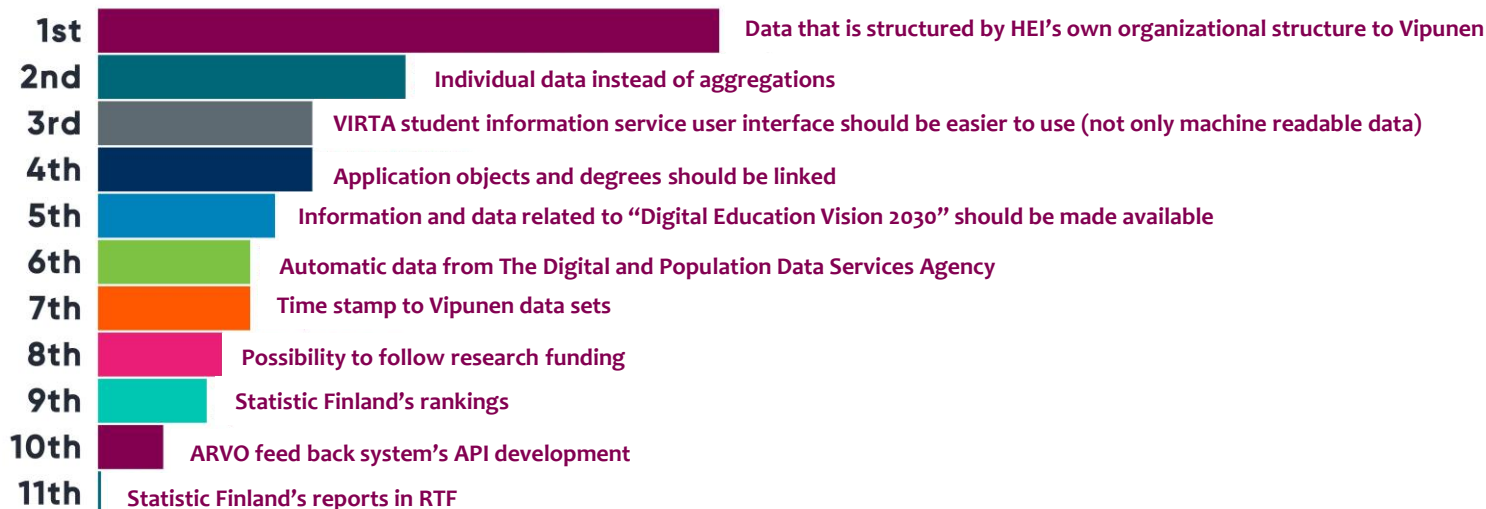


TOP 10 development needs by HEIs

Source: Workshop with HEIs on ecosystem of educational data, September 2019



Select 1-3 most important issues to develop



23

Questions & discussion



Heini Manninen
Development Manager

heini.manninen@csc.fi
linkedin.com/in/heini-manninen-9157553
@HeiniManninen

Looking forward to connect



facebook.com/CSCfi



twitter.com/CSCfi



youtube.com/CSCfi



linkedin.com/company/csc---it-center-for-science



github.com/CSCfi

Vipunen System Architecture

Vipunen Järjestelmä- ja teknologia-arkkitehtuurit

