



The Future of Openness in Research

Commentary on Keynote

Seminar on bibliometrics, 22 September 2020

Erika Lilja, Project Manager

INVEST Research Flagship Center, University of Turku

The genuine risk of focusing exactly on measurable things and availability of data on open research outputs.



Availability of data?

Openness is central in how research is conducted.

Not only in how research results and outputs are disseminated.



Policy- Practice Divide

Openness is inherently positional and relational and it comes in degrees and varieties of disclosure, collaboration, dissemination, sharing, and reuse.

Gaps between open science policy and research practice exist.

Researchers have difficulties in coping with open science policy implementation.

**Whose openness measures are
we developing and whose values
are we promoting,
if open science policies cannot
recognize the diversity of
openness on the level of research
practices?**



Focus

on recognizing open science pathways and on creating assessment frameworks, qualitative methods and tools for demonstrating open interaction throughout the research process.



**Develop
research evaluation systems
comprehensively.**

**Mimic current research impact
evaluation initiatives.**

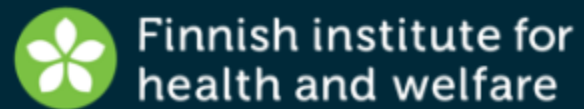


INVEST

Excellent science driving societal wellbeing

Guide to societal relevance, impact and its evaluation

Erika Lilja, Jani Erola, Christina Salmivalli, André Sourander, Pasi Moisio, Mikko Niemelä, Olli Kangas



Assessing impact and societal relevance

SIAMPI and ERIC guidelines offer us approaches to modify for INVEST social impact assessment purposes. The assessment approach is based on concrete data about the key elements in the production of social impact: pathway contributions, productive interactions and stakeholders. Data is collected through qualitative and quantitative methods.



Pathways and interactions

Pathway contributions,
research-based
expectations

Direct,
personal interactions

Indirect,
medium interactions

Financial support,
in-kind support

Impacts and relevance

Societal
relevance

Behavioral
change

Uptake,
use

Collaboration

Stakeholders

Key stakeholder
networks

One-to-one personal
and key stakeholder
networks

Different audiences

Joint initiatives
and projects

Assessment tools

Narratives, reviews,
testimonials, quantitative
data collection

Focus groups,
surveys, interviews,
intervention research

Quantitative data
collection, documents

Annual reports, other
documents



QUANTITATIVE DATA COLLECTION

01

Peer-reviewed publications

Number of peer-

02

Open access publications

Number of open

03

Citations

Web of Science and Scopus citation

04

Internationally assessed competitive research

collection



05

Scholarly engagements

Number and quality of Journal editorships / Publication referee assignments / Evaluation assignments / Expert statements / Memberships or positions of trust / Role in an academic

06

Research data and methods

Number and quality of open access metadata of INVEST research data / INVEST research data citation count / Number of open access code, algorithms and standards

07

Doctoral education

Number of DPINVEST doctoral degrees completed / Number of DPINVEST doctoral programme applicants

collection



08

Practitioner engagements

Regular interaction with professionals / Number and quality of practitioner events organised / Expert and

09

Policy engagements

Regular interaction with policy experts and decision makers / Number and quality of events organised / Expert

10

Public engagements

Regular interaction with public / Number and quality of events organised / Social media presence / Social media influencers / Research communication / Popularised science

Work in progress!



11

Media engagements

Regular interaction with media / Number and quality of events organised / Media interviews / Media hits

12

Expert education and training

Degree education: Number of MPINVEST students / degrees / Study and seminar programmes / Professional training: Number of participants / programmes

13

Collaborators

Number of INVEST key collaborators and quality of collaborations / Descriptions of the successfulness of the collaboration / New company collaborator

collection



14

Trademarks

Number of current and new INVEST trademarks and description of related aims and operations

15

Licensing agreements

Number of current and new INVEST licensing agreements and description of related aims and operations

16

Social innovations

Number of current and new INVEST social innovations and description of related aims and operations

17

Stakeholder contributions

Financial contributions / Direct involvement / Facility sharing / Equipment, resources or data reserves provided by national or international research infrastructures used / Other resources shared

18

Contextual response analysis (CRA)

Bibliometric analysis of the social impact or use in several domains, including parliament, news media, scientific literature and among societal users of selected INVEST publications 2019 - 2024 and 2019 - 2027.



19

Funding

Other Academy of Finland funding / External in-kind contribution to the flagship / Other foreign / Other Finnish / University/research institute's funding / Business companies / Business Finland / EU

20

Staff, visiting staff and jobs created

Staff: Professors / Researchers / Postdoctoral Researchers / Postgraduate student / Assisting personnel / Impact personnel / Female % / Foreigners % / New international recruits / New tenure track positions / Number of INVEST visiting fellows / Jobs created /

Quantitative data collection

- 20 main categories, of which 4 use bibliometrics, over 90 subcategories
- INVEST definition for open access to publications
- Open metadata, sharing research data (not publicly but for other researchers)
- Shared use of research infrastructure, facilities and other resources

Quantitative data collection

Quantitative data collection

Quantitative data collection

Quantitative data collection

MACRO-NARRATIVE THEME

01 INTERVENTIONS

Testing, developing and implementing universal and targeted INVEST interventions and building capacity to create well-being and enhance life skills. Producing information on the reach, uptake, implementation and cost-effectiveness of the past and ongoing interventions.



5

MACRO-NARRATIVE THEME

02 IDENTIFIED GAPS

Identifying macro-level gaps in services provided by the welfare state institutions. Identifying micro-level gaps and ineptitudes in benefit and services provided by the welfare state institutions. Producing and disseminating information on gaps and effects of the welfare state.

Impact indicators



5

5

Impact indicators

Impact indicators



MACRO-NARRATIVE THEME

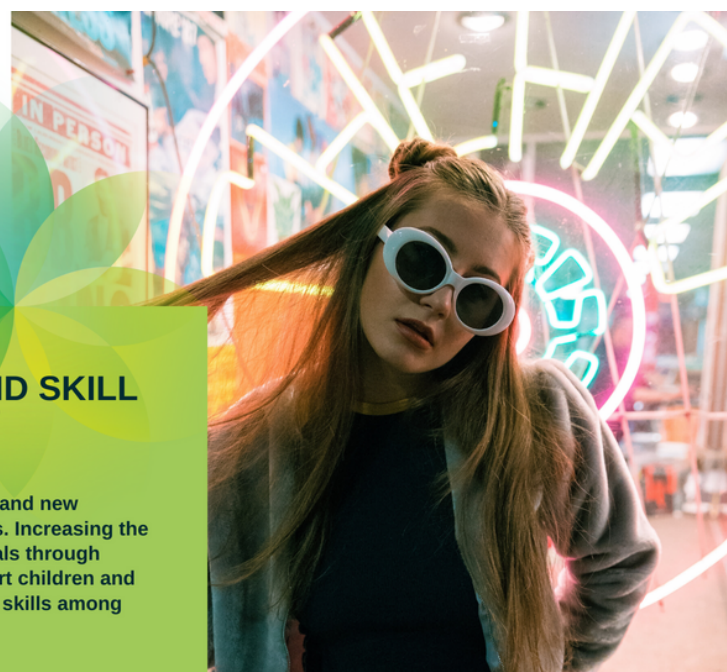
03 DEEPENED UNDERSTANDING

Deepening the understanding on welfare state efficiency in reducing the negative outcomes that are related to many of the structural family disadvantages experienced during the early life course. Emphasising social investments giving vulnerable groups better tools to cope in different phases of life rather than merely compensating problems through income transfers.

MACRO-NARRATIVE THEME

04 WELLBEING AND SKILL DEVELOPMENT

Developing wellbeing skills and new practices for public services. Increasing the skills of various professionals through social innovations to support children and adolescents. Enhancing life skills among adolescents.



5

Impact indicators

META-NARRATIVE

05 NEW WELFARE STATE MODEL

Identifying the adverse conditions and provided cost-efficient interventions to avoid negative wellbeing outcomes and responding to the needs of the basic social security renewal program and ongoing health and social services reform. Increasing social investments giving vulnerable groups better tools to cope in different phases of life. Improving the efficiency of the current welfare state institutions and conditions for research-based policy-making and transforming the welfare model from compensation to prevention.



5

Impact indicators

Qualitative data collection: narratives

- Meta-narrative
- Macro-narrative themes
- Micro-narratives



**Skills development.
Professional training.**

The background features several abstract, organic shapes in shades of purple and blue. A large, irregular shape is on the right side, and a smaller circle is positioned above the main text. The colors transition from light blue to deep purple.

Thank you!

erika.lilja@utu.fi