

# UEFRAE2023 Process and Results

Anu Liikanen and Tomi Rosti, 05.04.2024

# UEFRAE2023 Process

# UEFRAE2023 & UEF Strategy Work

- Research Communities are to promote high quality interdisciplinary research. RCs in action from 2020.
- UEFRAE2023:
  - Identify the most competitive research and research strengths
  - Recommendations to develop UEF's research towards international excellence
  - Potential for collaboration within UEF
  - Results will be used for strategy work and profile building actions & negotiations with the Ministry of Education and Culture in 2024.

# UEFRAE2023 Evaluation Process



- Assessment was based on:

- Self Evaluation Reports by RCs (self-evaluation reports, indicators, bibliometric analyses)
- Interviews
- Panel consensus

# Self-Assessment Report

- Documents in UEFRAE2023 Teams
  - [UEFRAE2023 Self-Assessment Instructions](#)
  - [UEFRAE2023 Self-Assessment Report Template](#)
- The self-assessment report must be sent to Anu Liikanen (anu.liikanen@uef.fi) by **21 June 2023**. Statistical background information will be collected by University Services. Indicators will be collected with regards to the personnel **who have been part of the RC in 2022**. Data collection will be ready in April-May 2023.
- Bibliometric analysis of Principal Investigators (PI) will be done by the University Library. **RCs confirm the name list of PIs by sending the name lists to Tomi Rosti (tomi.rosti@uef.fi) by the end of March 2023.**

# Panel Assessment

- Same criteria and evaluation scale as in Self-Assessment Report.
- **UEFRAE2023 Panel Assessment Report Instructions**
- One evaluation panel (10–13 members) will assess all the RCs.
- The research community under evaluation is assessed as one, single entity.
- The research activities of the RC are assessed from an international perspective. Research conducted by the RC should be compared to top international research within the same field of science, while paying attention to the scientific characteristics of the disciplines.

# Panel Assessment

- Based on Self-Assessment Report + Interviews
- The university will nominate two panellists for each RC to act as primary evaluators and to be responsible for the final evaluation report of the RC.
- The primary evaluators will write and submit a pre-evaluation report before the site visit.
- During the site visit, the panel will interview all RCs and focus on questions arising from the RC Self-Assessment Reports and pre-evaluations.
- The panel will agree on a final evaluation during the site visit by using information received both from the RC Self-Assessment Reports and interviews.

# UEFRAE2023 Evaluation Panel

- Panel Chair, Professor Heikki Mannila, Department of Computer Science, Aalto University, Finland
- Professor Sven Frøkjær, Vice-Dean, Faculty of Health and Medical Sciences, University of Copenhagen, Denmark
- Professor Bent Greve, Department of Social Sciences and Business, Roskilde University, Denmark
- Professor Annette Grueters-Kieslich, Dean, Charité-Universitätsmedizin Berlin, Germany
- Professor Hans-Christen Hansson, Department of Environmental Science, Stockholm University, Sweden
- Professor Per Mickwitz, Pro Vice-Chancellor, Lund University, Sweden
- Professor Tomas Lundmark, Department of Forest Ecology and Management, Swedish University of Agricultural Sciences, Sweden
- Professor Ole Petter Ottersen, Institute of Basic Medical Sciences, University of Oslo, Norway
- Professor Bo Petersson, Department of Global Political Studies, University of Malmö, Sweden
- Professor Roberta Ramponi, Department of Physics, Politecnico di Milano, Italy
- Group Leader Sabina Tahirovic, German Center for Neurodegenerative Diseases, Site Munich, Germany
- Professor Joke Voogt, Faculty of Social and Behavioral Sciences, University of Amsterdam, Netherlands



# Assessment Criteria

- Unit of assessment: Research Community.
- Time period under evaluation: 2019-2022.
- Activities of the RC were assessed from an **international perspective**. The RC under evaluation was assessed **as one, single entity**.
- The Panel evaluation on the following aspects:
  - A. Research excellence and scientific quality
  - B. Research environment and operational conditions
  - C. Impact beyond academia
  - D. Strategic visions and implementation
  - OVERALL ASSESSMENT
- SCALE 1-6: 6 Outstanding, 5 Excellent, 4 Very good, 3 Good, 2 Fair, 1 Poor

# Data and Bibliometrics (part of self-assessment report)

# Data

- Data for years 2019-2022 is collected with regards to the personnel who have been part of the RC in 2022. One researcher and his/her merits is calculated only into their primary RC.
- PERSONNEL
  - Full Time Equivalent of RC personnel in 2022, who have had contract at UEF.
  - Share of women and international research personnel.
  - Personnel data does not include grant researchers who have not had contracts with UEF in 2022.
- FUNDING
  - Research funding used in projects in UEF's accounting.
  - Research funding data does not include research funding granted directly to researchers.

# Data

- **UEF CORE FUNDING**

- UEF core funding used in salary costs (salaries and personnel costs) of RC personnel.
- UEF core funding (self-financing) in externally funded projects.

- **UEF STRATEGIC FUNDING**

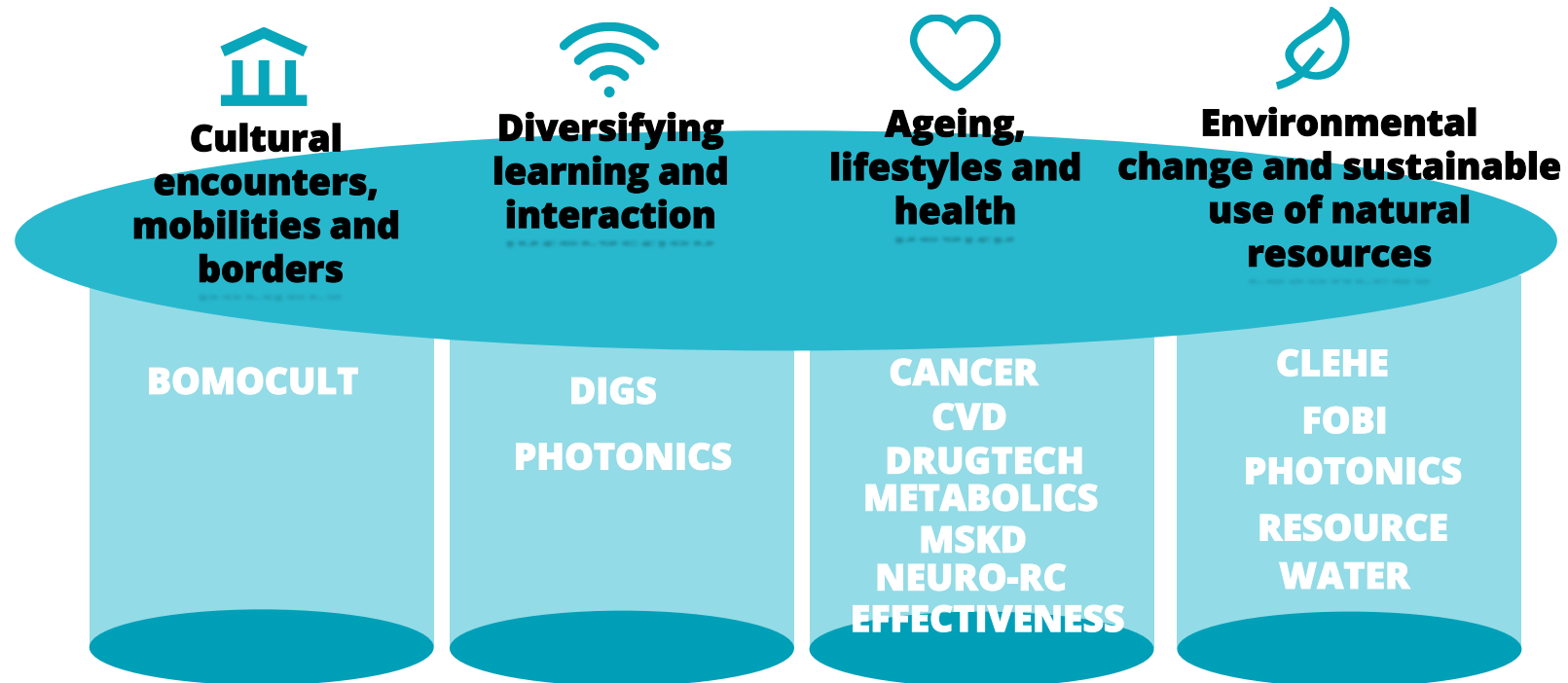
- PROFI-funding and PROFI measures supported by the UEF core funding
- UEF Post Doctoral Researchers & Research Fellows
- UEF positions for doctoral students
- UEF preparatory funding for international research projects
- UEF strategic support for RC coordination
- OBS! Part of the strategic funding is included also in UEF core funding

# Bibliometrics

- Bibliometrics were done at maximum for 25 PIs of one RC.
- Data source: Scopus, Web of Science and Google Scholar
- Data collected in April – May 2023.
- Indicators:
  - Number of publications in total
  - Number of publications in 2019-2022
  - Number of citations in total
  - Number of citations in 2019-2022 to publications published in 2019-2022
  - H-index

# Evaluation Units: Research Communities

# UEF RESEARCH COMMUNITIES IN STRATEGIC PROFILE AREAS



# RCs in Faculties

Research Community	Philosophical Faculty	Social Science and Business Studies	Science, Forestry and Technology	Faculty of Health Sciences
BOMOCULT	BOMOCULT	BOMOCULT		
CANCER			CANCER	CANCER
CLEHE		CLEHE	CLEHE	
CVD				CVD
DIGS	DIGS	DIGS	DIGS	
DRUGTECH			DRUGTECH	DRUGTECH
EFFECTIVENESS		EFFECTIVENESS	EFFECTIVENESS	EFFECTIVENESS
FOBI		FOBI	FOBI	FOBI
METABOLICS			METABOLICS	METABOLICS
MSKD			MSKD	MSKD
NEURO-RC		NEURO-RC	NEURO-RC	NEURO-RC
PHOTONICS			PHOTONICS	
RESOURCE		RESOURCE		
WATER		WATER	WATER	WATER



# UEFRAE2023 Results General Recommendations

# General Observations

- **The research done at UEF is of high quality** and there are some research communities whose research is clearly world-leading in their areas. The themes of the RCs are of high societal significance, and their impact beyond academia is large.
- **For a university of this size and so young, this is remarkable.**
- **The RC is a strong and well-functioning instrument for advancing interdisciplinary research.** The goals and the practice of RCs support strategic thinking, long term planning, and renewal of the research in the university.
- **Specifically, the university has allocated funding strategically to the RCs and used them successfully** as the vehicle for the development of research in the university.
- **The results from the RCs show that many things have been done right in UEF.**

# Recruitments

- Recruitments - The most important decisions a university makes:
  - Address it strategically!
  - Excellent examples of recruiting, where RCs and the departments, faculties, and the university have worked seamlessly together. BUT: always room for improvement.
  - Need for gender balance and international recruitments.
  - How UEF can be made even more attractive to researchers coming from elsewhere?

# Collaboration

- Many RCs have wide national and international networks.
- Some described mainly national networks; it seems that they could use the national networks as a springboard for international networks.
- Increase collaboration with USA, Canada, Asia.
- Increase collaboration within EU.

# Impact

- The collaboration with the surrounding ecosystem(s) (consisting of companies, governmental bodies, NGOs, etc.) could be better.
- Strong collaboration with KUH, but could be even stronger.
- For several RCs their research has policy implications, and many have a strong presence in the formulation of national policies. RCs could have a stronger voice on the EU level policymaking.
- Become involved in health care reform.
- Additional support for technology transfer is needed.

# Funding

- UEF has been successful in obtaining funding from the Research Council of Finland, especially in the Strategic Research Council funding instrument and in the Flagship Program.
- The share of EU and other international funding could be larger:
  - A clear weak point is the relatively small number of ERCs in UEF.
  - Coordinating roles in EU projects area rare.
- The use of PROFI-funding has been very influential: it has successfully been used for strategic development. This is a particularly fine example of how strategic actions can support the development of a university. The university should continue similar significant and strategic funding for long-term development for RCs.

# Data & Infrastructures

- Data analysis and AI:
  - Some RCs already have interesting collaborations where artificial intelligence and advanced data analysis plays a strong role.
  - Several RCs indicated that they plan to recruit new personnel for this area.
  - The university should formulate a **common programme on advancing the use of these technologies and do the recruitments in a coordinated fashion.**
- The infrastructure policies of UEF seem good, and the panel would like to stress the **need for further strategic development.**

# UEFRAE2023 Results Research Communities



# Concept of Research Communities

- **RC concept is useful and functions well** (vs. other forms for strategic development: short-term projects or established institutes)
- Combines **bottom-up and top-down** approaches - self-organizing but supported with strategic funding.
- The importance of **leadership** is clear.
- Role in the organisation? However, **the interaction and cooperation between the vertical (faculties and departments) and horizontal (RCs) structures** should be continuously monitored.
- **Structures and mode of operations differ** quite a lot from each other:
  - Some RCs have a single research question, challenge, theme, or area that they work on, and they have adopted a multidisciplinary approach in addressing that.
  - Some RCs consist of researchers who share some of their research interest, but the area of activities of the RC is not as clearly defined (mainly a platform for facilitating collaborations).

# Development of RCs

- Some RCs plan to go forward with relatively little change, while others had plans including strong aspects of renewal in their research profile.
- Future plans: RCs could be more specific in what they think are their **unique strengths**. -> **RCs should have a strategic plan with milestones.**
- Establish and international Scientific Advisory Board for each RCs
- Constant evaluation is needed:
  - UEFRAE process every 5<sup>th</sup> year
  - Mid-term evaluation

# Development of RCs

- As a strategic development instrument current **RC structure can not be a constant situation.**
- Research communities are long-term efforts, but there has to be a way for modifying the structure. Process for forming new communities?
  - Combination of bottom up- and top-down approaches.
  - Process should be based on an analysis of the changes in the world, in the research and education profile of the university, and in the operating environment.
  - Evaluate the need or opportunity for mergers, splits, reorientations, or completely new RCs.

# Numeric Evaluation of RCs

Research Community	Excellence	Operational Conditions	Impact	Visions	Overall	UEFRAE2019
CLEHE	6	6	5	6	6	6
CVD	6	6	6	6	6	6
DRUGTECH	6	6	6	6	6	6
NEURO-RC	6	6	6	6	6	6
PHOTONICS	6	6	5	5	6	6
BOMOCULT	5	5	4	4	5	5
MSKD	5	5	6	5	5	5
CANCER	4	5	4	4	4	5
EFFECTIVENESS	4	5	4	4	4	4
FOBI	5	4	5	4	4	4
METABOLICS	5	4	5	4	4	5
RESOURCE	3	4	4	4	4	4
WATER	4	4	5	4	4	5
DIGS	4	4	3	3	3	3

# UEFRAE2023 Publication

- Available from 20 Dec 2023  
in: <https://erepo.uef.fi/>
- UEFRAE2023 process
- General Recommendations
- RC Evaluation Reports
  
- General Series No 45

