

The background is a dark, moody photograph of a narrow alleyway between buildings. A person is captured in mid-air, jumping over a metal railing on the right side of the frame. The lighting is low, with some light coming from the end of the alley, creating a sense of depth and movement.

COMPLEAP

Learner-centered digital ecosystem of competence development

Mid-term review seminar December 4th

COMPLEAP



Compleap is a 2-year long (12/17-11/19) EU-project funded by DG Connect as part of creating the Digital single market

Creating services for learners with learners.



COMPLEAP PARTNERS



FINNISH NATIONAL
AGENCY FOR EDUCATION



UNIVERSITY
OF OULU



Dienst Uitvoering Onderwijs
*Ministerie van Onderwijs, Cultuur en
Wetenschap*



C S C

GRADIA

WELCOME VIDEO

Olli-Pekka Heinonen
Director General
EDUFI

<https://youtu.be/1trAN-QS58w>



WHAT IS OUR VISION

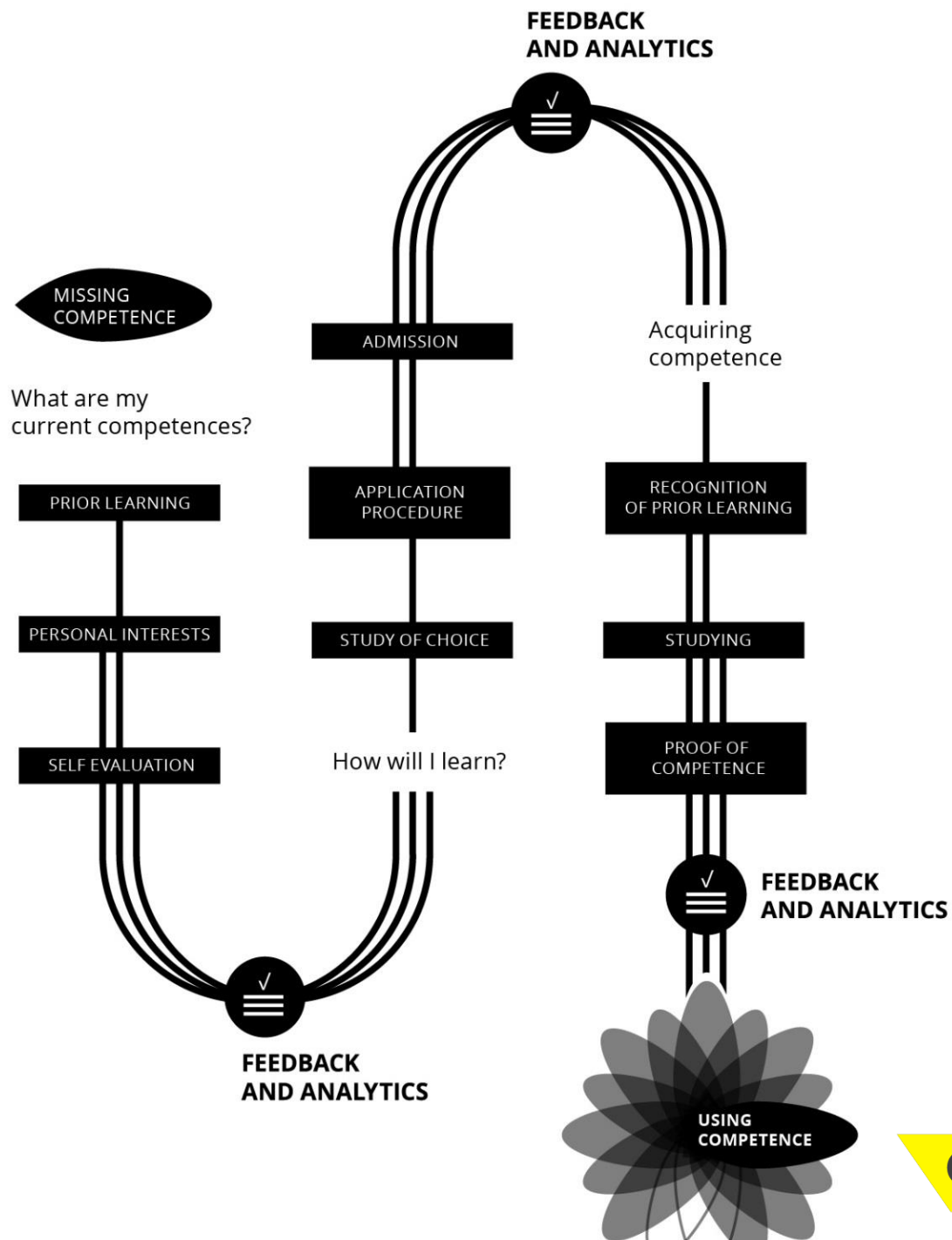


Supporting endusers in lifelong personal development

→ helping to find individual learning paths based on existing skills and competences - leading up to new opportunities for competence development



DIGITAL LEARNER PATH



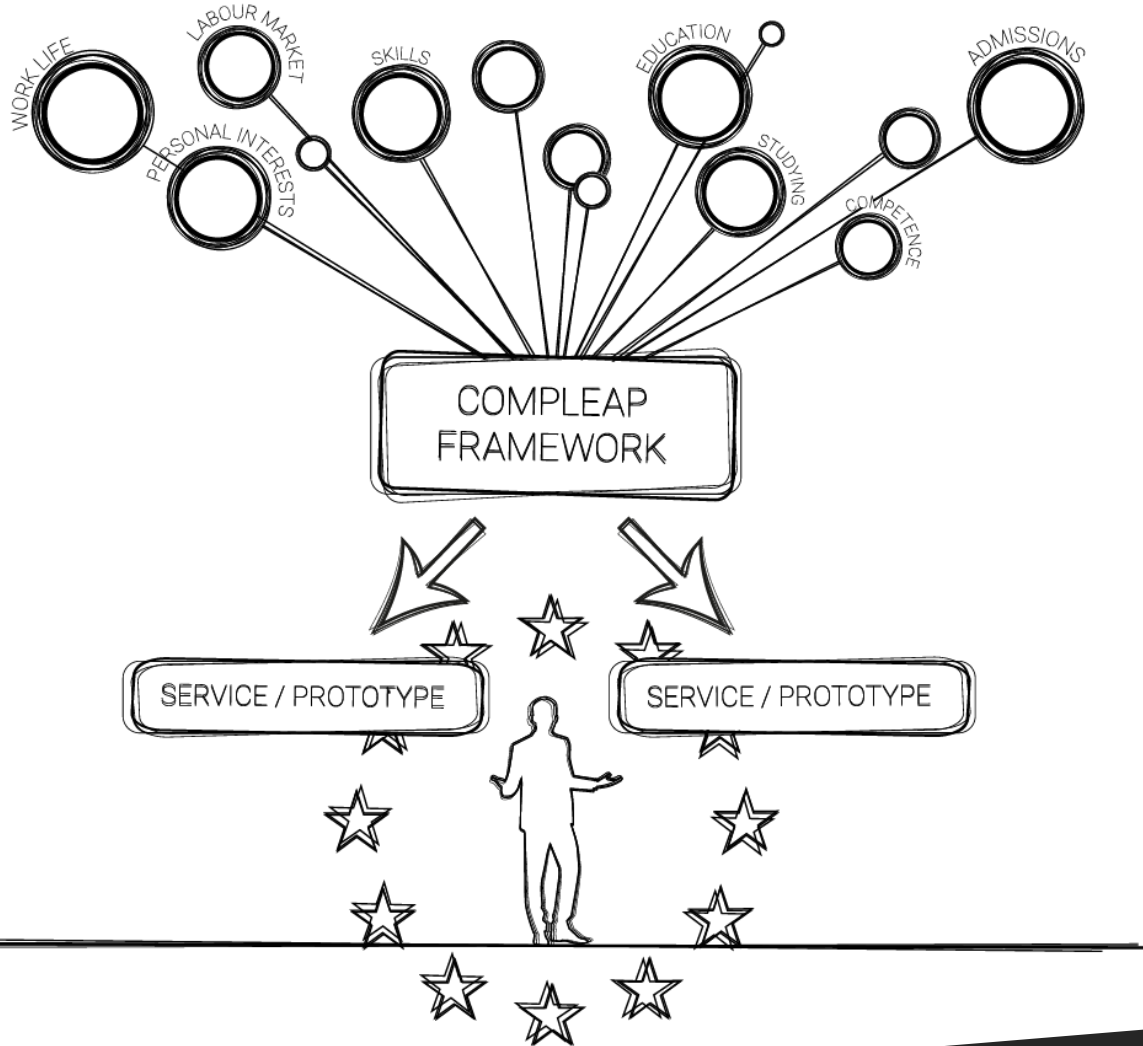
THREE SERVICES AS OUTCOMES

- 1) **An Opportunity for Users to Plan Own Learner Pathway** - personal services to map competences throughout their life
- 2) **Visualisation through Data Analytics** – to provide the user with insights out of data
- 3) **The Learner Centered Service Framework** - to be of EU-wide use

THE LEARNER PATH

Lead: EDUFI

DISTINCT MODULES FOR THE LEARNER PATH



The ComLeap Modules include a **Competence Profile**, which ties together user **competences, skills and interests**, with possibilities of guidance and **comparing existing education opportunities**

COMPLEAP TOOLS

COMPLEAP

MY PROFILE

EDUCATIONS

JOB



Customer service professional
looking for new challenges

Maryam Margain

Brussels



Master of Arts

University of Brugge



Marketing Assistant

Londerzeel Ice Cream Factory ltd.

Teaching

Critical thinking

Customer service

Scientific study methods

Spoken Swedish



You don't have an education path yet

CREATE EDUCATION PATH

DEMO



Co-creation
Co-validation

<https://projects.invisionapp.com/d/main#/console/15984253/331538759/preview>

ANALYTICS

Lead: University of Oulu

THE GOAL FOR USING ANALYTICS IN COMPLEAP



Personalizing the user experience

- Providing competence visualisations and education recommendations based on traces of user data and user information
- Evoking user reflection on his or her competences, interests and future learning possibilities

WHAT HAS BEEN DONE?



→ A conceptual data model showing how information flows in the Compleap services

→ User requirements for learning analytics

→ Descriptions of needs for visualising competences services

WHAT NEXT?

Testing / piloting visualisation ideas with end users to get feedback

Checking available data sources and metadata classifications

Starting agile development process of the services based on analytics requirements

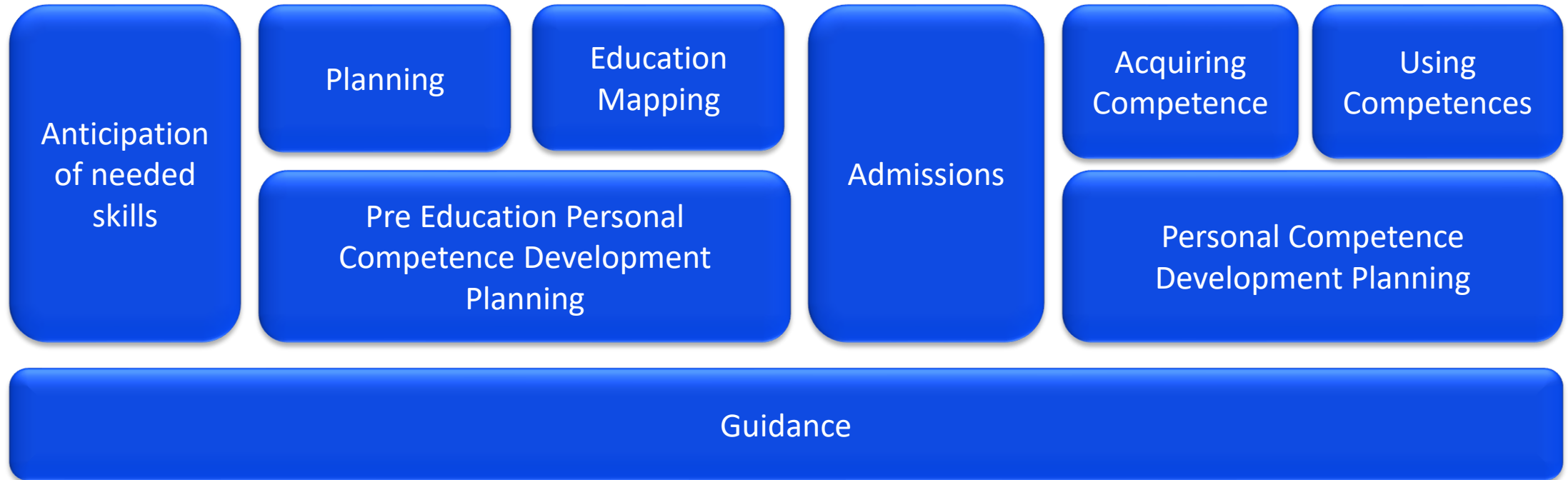
DEPICTING THE SERVICE FRAMEWORK

Leads: CSC & EDUFI

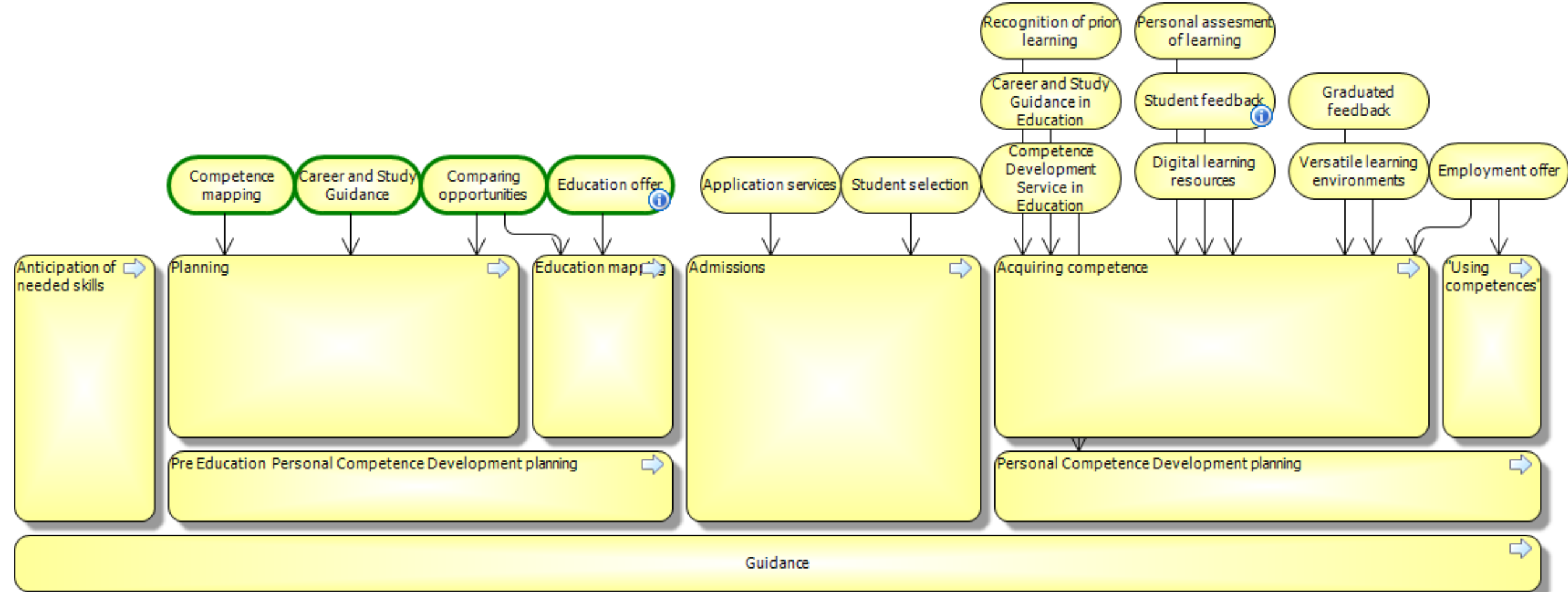
WHAT IS THIS FRAMEWORK ARCHITECTURE THING?

- ✓ The framework architecture's **purpose** is to describe the learner's pathway at a very generic level so that the **framework can be deployed across the member countries of European Union**.
- ✓ The holistic approach takes into account all stakeholders to build an ecosystem and helps digitalizing the learner's pathway without information boundaries
- ✓ The Framework architecture describes learner's pathway from different perspectives: **business, information and applications**
- ✓ Architecture work method is based on global standards.
- ✓ Includes an example how this framework is implemented in Finland.

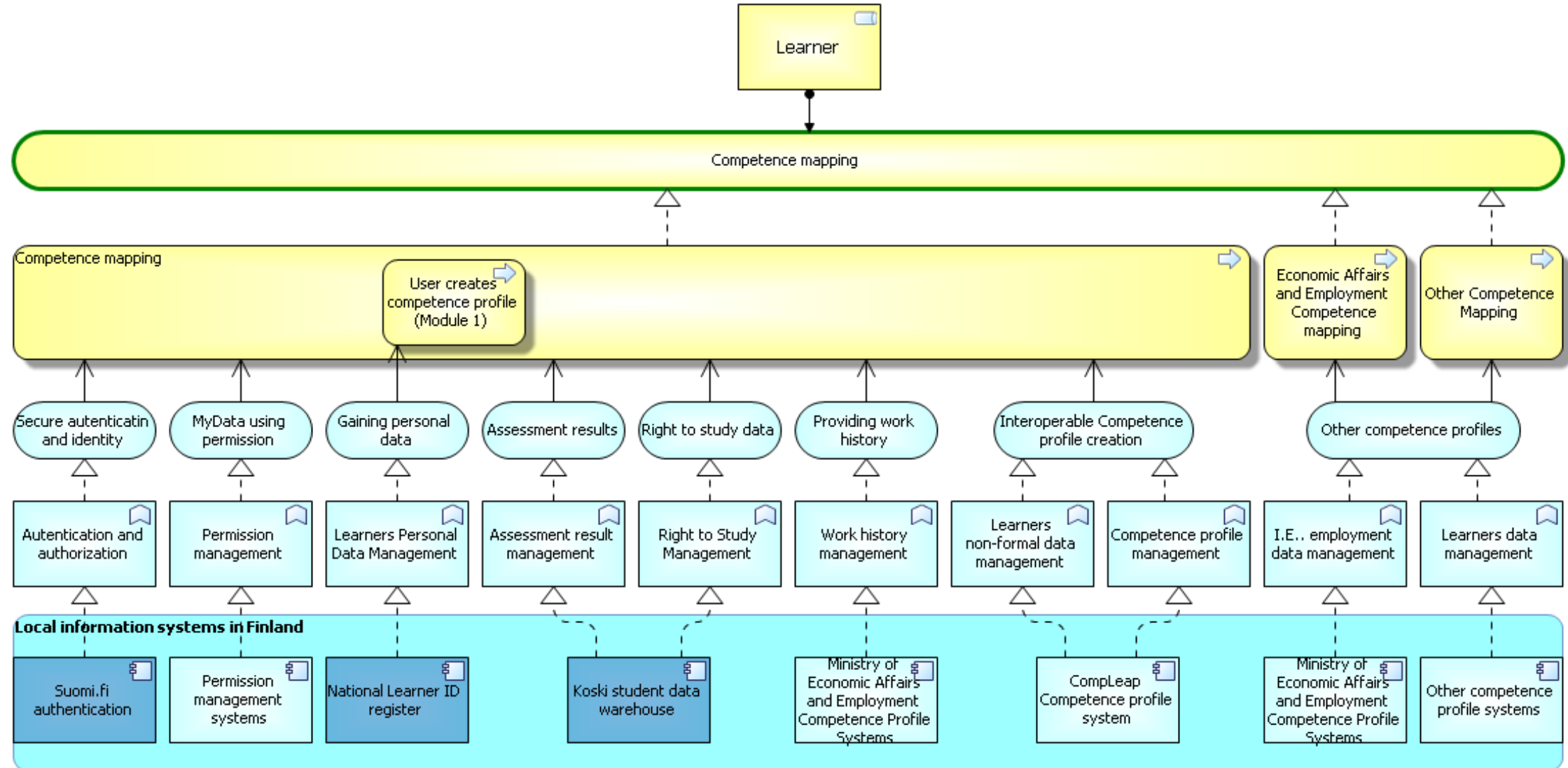
THE LEARNERS VALUE STREAM



Digital services for learners – learner's pathway



EXAMPLE: HOW THIS FRAMEWORK CAN BE IMPLEMENTED IN FINLAND



CO-CREATION AND PILOTING

Leads: Gradia & EDUFI

WORKING TOGETHER

2018 – 2019



Reference Group
Webinars

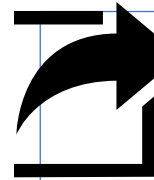


Associate Partner
Workshops



Evaluation

Impact Evaluation Study
November 2019

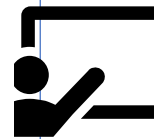


Surveys

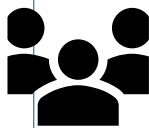


Shadowing

•Ohjaamo Helsinki



Stakeholder Seminars



Reference Group
Workshops

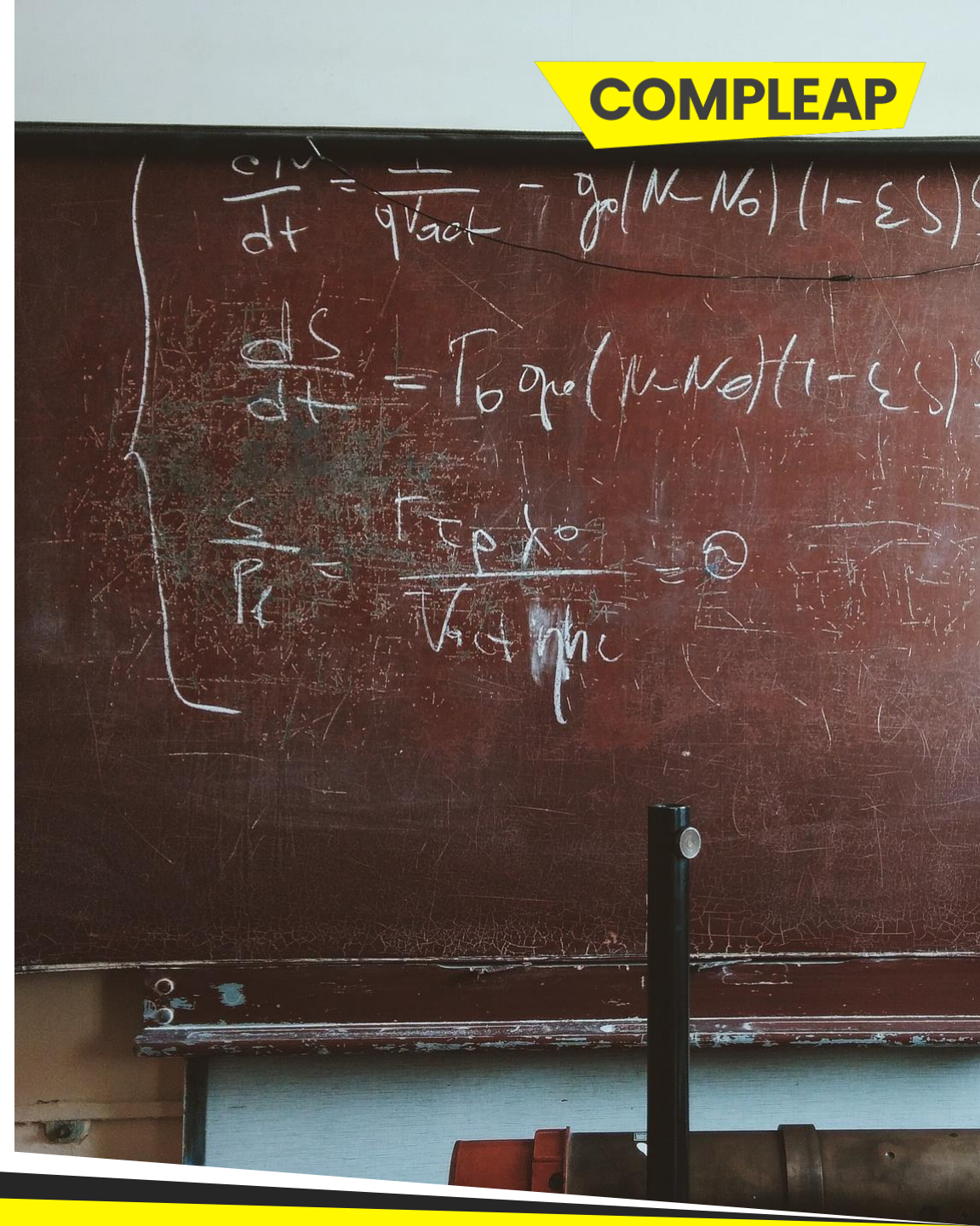


Testing & Piloting with
the end-users from the
different user groups

WORKING WITH

Stakeholders
Reference groups
Associate partners
End-users

Aim: User-centered testing
and piloting of the modules



PILOTING TIMETABLE

Mock-up from September

- validating ideas and needs

HTML from January 2019

- user testing of functionalities

Limited beta later

- small number of functionalities that actually work and are integrated with analytics, etc.

Reference Group Workshop on Mock-up and HTML Kick off Oct 10th, 2018 in Helsinki

Associate partner workshops from 2018-2019 for tackling piloting and user testing

Impact Evaluation Study by November 2019
- Including user testing in Fall 2019

USER GROUPS FOR PILOTING

These to be defined according to partner interests and supply:

- NEET
- Graduates
- Between jobs
- Recent Immigrant

SHADOWING

Testing one-on-one 20-30 minutes per user/applicant. Users actions followed within use of service.

STUDENT UNION PERSPECTIVE

INTERNATIONAL VIEW DIGITAL SERVICES FOR LIFELONG LEARNING

JOIN US IN OUR WEBINARS

ONLINE SESSIONS FOR PROTOTYPE DEFINITIONS:

Session 2: Wednesday 5 December at 9:30 - 10:30.

REGULAR WEBINARS

Webinar 6: Wednesday 16 January 2019 at 9:30 - 10:30.

Webinar 5: Wednesday 19 December at 9:30 - 10:30

You can join our webinars and sessions by accessing:

<https://connect.funet.fi/compleap/>

STAY IN TOUCH

<https://www.compleap.eu/>

compleap@csc.fi

<https://wiki.eduuni.fi/display/csccompleap/Reference+Group+Webinars+and+Workshops>