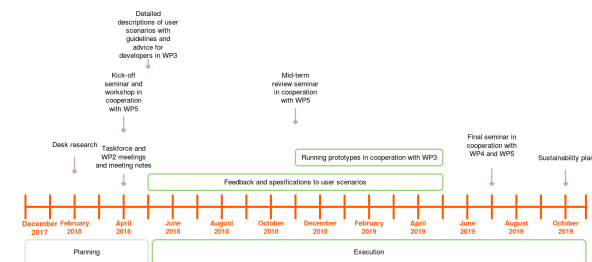


# WP2: Requirements and architecture design

WP2 is responsible for innovating and designing the ecosystem and its service modules. A key element of the project results includes the depicting of a **learner-centered** framework for competence development. This work has entailed a rigorous journey into enterprise architecture.

## Timeline for architecture and requirements development




The work package is responsible for studying the requirements to build digitalised learner ecosystem for the digitalised services. This learner-centred approach to personal data management and processing reflects strongly the Nordic Mydata concept that aims at strengthening digital human rights while opening new opportunities for businesses to develop innovative personal data-based services built on mutual trust. In this work package, the ecosystem architecture has been devised and it is used as a reference throughout the project.

## What has been going on?

This WP has set out to define the framework for the project including the definition of the user scenarios, main architecture aspects and system requirements that will be exploited by the other WPs.

The main idea of the framework architecture can be summarized in this video:

The goal has been to look into various processes within the ecosystem, describe potential user scenarios and finally outline the requirements for the prototype versions. To acquire relevant user stories, the WP 2 has engaged with stakeholders in the process by organising a kick-off seminar for interested stakeholders to engage them to the project as reference groups. Feedback from the stakeholders has been crucial to guarantee the innovative and applicable nature of the user scenarios. The composition of reference groups represent various expert views on skills formation needs including immigrants and refugees. In [M4 a kick-off seminar with workshops](#) was organized for all partners and other interested and opinion-forming parties in cooperation with the WP5. The seminar was a forum to exchange expertise, experience, technical solutions to some recognized problems.

 **Contact information:**  
annica.moore(at)oph.fi

**Tasks**

T1.1: Architecture and interoperability (TF-AI): developing the Ecosystem Architecture framework, by incorporating the principles of standardization, interoperability and service-oriented architecture to create the conditions for sharing components and for better integrating developed system (s) across the Europe

T1.2: Personal learner plan (TF-PLP): developing the electronic personal learner plan with tailored tools, contacts and information on opportunities relevant to support citizen to start, progress and finalise the journey. This means development of a personalised learner plan that includes several independent but interconnected modules from visual and functional point of view.

T1.3: Learning environments and analytics (TF-LEA): explore next generation digital learning environment to meet the changing needs of learning society. Its principal focus is on personalisation; analytics, advising, and learning assessment; collaboration; and accessibility.